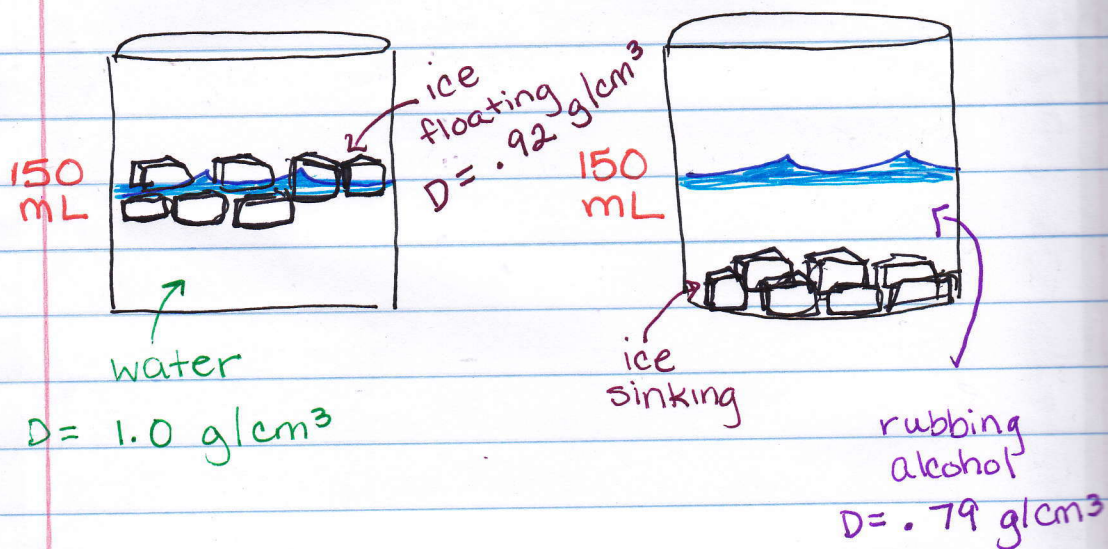


Curious Cubes Demo

Make a drawing of the demo and describe what is happening and why.



Water is one of the few substances that is less dense in its solid form than its liquid form. As water freezes, its crystalline structure becomes more open and the ice expands, making it less dense than liquid water.

This causes it to float. In rubbing alcohol, the ice is more dense causing it to sink.

Most dense liquid

least dense liquid

most dense liquid